

Photons: Experimental violation of Bell inequalities with photons

Mirjam Weilenmann, Dominik Waldburger



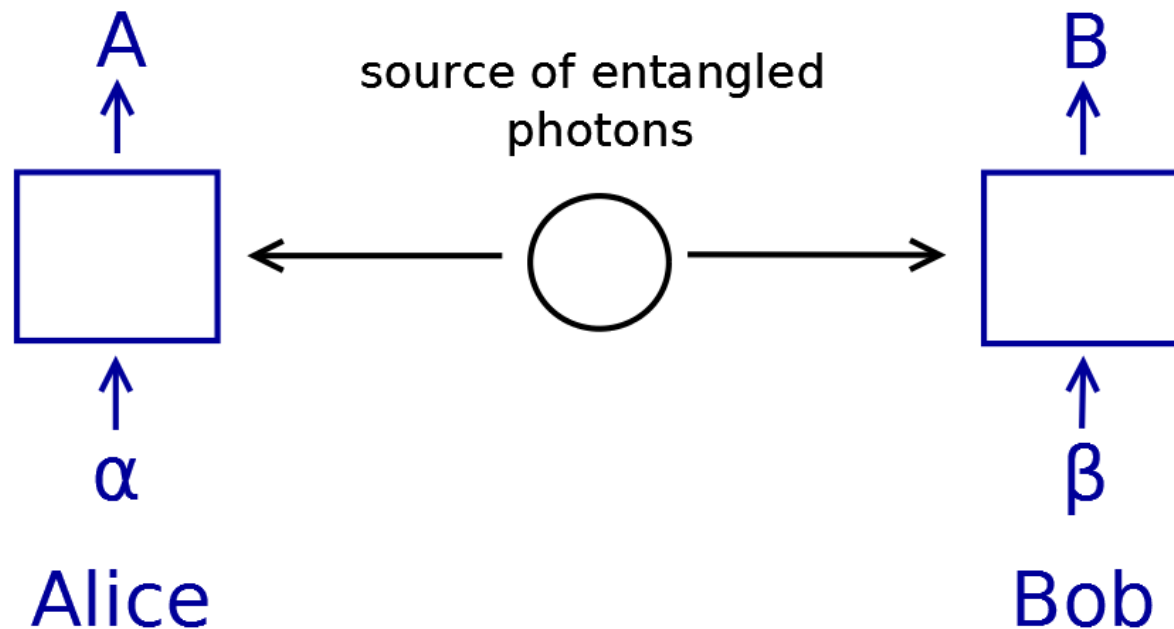
Content

- Theoretical Aspects
- Experimental Realization
 - 2 Experiments with Photon
 - Comparison with atomic and superconducting system

Background

- Einstein, Podolski and Rosen (1935):
 - quantum mechanics not complete
 - “hidden variables” needed
- Bell (1964):
 - “local realistic” theories not compatible with quantum mechanics

General Setup



α, β : detector settings, chosen by Alice and Bob respectively

A, B : outcomes $\in \{-1, 1\}$

CHSH Inequality

- Alice and Bob can each choose between two detector settings (α, α' and β, β' respectively)
- Outcomes: $A(\alpha, \lambda), A'(\alpha', \lambda)$ & $B(\beta, \lambda), B'(\beta', \lambda) \in \{-1, +1\}$
- What values can $AB - AB' + A'B + A'B'$ take?

CHSH Inequality

- Alice and Bob can each choose between two detector settings (α, α' and β, β' respectively)
- Outcomes: $A(\alpha, \lambda), A'(\alpha', \lambda)$ & $B(\beta, \lambda), B'(\beta', \lambda) \in \{-1, +1\}$
- What values can $AB - AB' + A'B + A'B'$ take?
$$\rightarrow A(B - B') + A'(B + B') = \pm 2$$

CHSH Inequality

- Alice and Bob can each choose between two detector settings (α, α' and β, β' respectively)
- Outcomes: $A(\alpha, \lambda), A'(\alpha', \lambda)$ & $B(\beta, \lambda), B'(\beta', \lambda) \in \{-1, +1\}$
- What values can $AB - AB' + A'B + A'B'$ take?
$$\rightarrow A(B - B') + A'(B + B') = \pm 2$$
- If one then takes the expectation value:
$$|E(AB) - E(AB') + E(A'B) + E(A'B')| \leq 2$$

Quantum mechanics Violation

- Consider an entangled state:

$$|\varphi\rangle = \frac{1}{\sqrt{2}} (|01\rangle - |10\rangle)$$

Quantum mechanics Violation

- Consider an entangled state:

$$|\varphi\rangle = \frac{1}{\sqrt{2}} (|01\rangle - |10\rangle)$$

- Choose the measurements:

$$A(\alpha) = \sigma_z, \quad A'(\alpha') = \sigma_x$$
$$B(\beta) = -\frac{1}{\sqrt{2}} (\sigma_z + \sigma_x), \quad B'(\beta') = \frac{1}{\sqrt{2}} (\sigma_z - \sigma_x)$$

Quantum mechanics Violation

- Consider an entangled state:

$$|\varphi\rangle = \frac{1}{\sqrt{2}} (|01\rangle - |10\rangle)$$

- Choose the measurements:

$$A(\alpha) = \sigma_z, \quad A'(\alpha') = \sigma_x$$
$$B(\beta) = -\frac{1}{\sqrt{2}} (\sigma_z + \sigma_x), \quad B'(\beta') = \frac{1}{\sqrt{2}} (\sigma_z - \sigma_x)$$

- $E(AB) - E(AB') + E(A'B) + E(A'B') = 2\sqrt{2} > 2$

Loopholes

- Efficiency loophole
- Locality loophole

Experimental violation of Bell inequalities

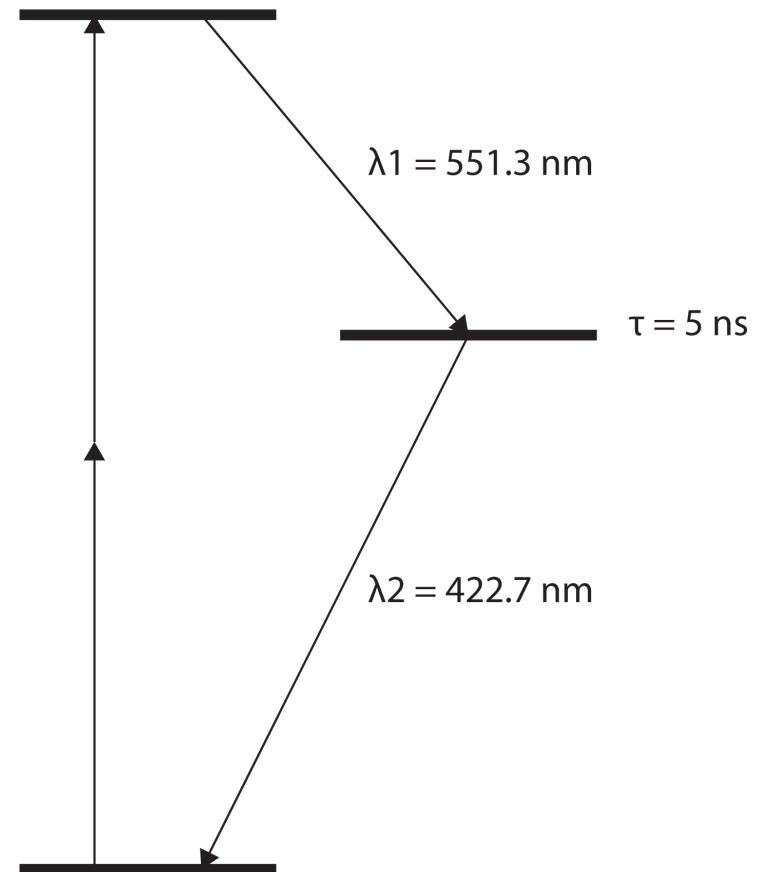
- *Experimental Realization of EPR-Bohm Gedankenexperiment: A New Violation of Bell's Inequalities.* Aspect, A. (1982)
- *Violation of Bell inequality under strict Einstein locality conditions.* Weihs, G. (1998)
- *Bell inequality violation with two remote atomic qubits.* Matsukevich, D. N. (2008)
- *Violation of Bell's inequality in Josephson phase qubits.* Ansmann, M. (2009)

Experimental violation of Bell inequalities

- *Experimental Realization of EPR-Bohm Gedankenexperiment: A New Violation of Bell's Inequalities.* Aspect, A. (1982)
- *Violation of Bell inequality under strict Einstein locality conditions.* Weihs, G. (1998)
- *Bell inequality violation with two remote atomic qubits.* Matsukevich, D. N. (2008)
- *Violation of Bell's inequality in Josephson phase qubits.* Ansmann, M. (2009)

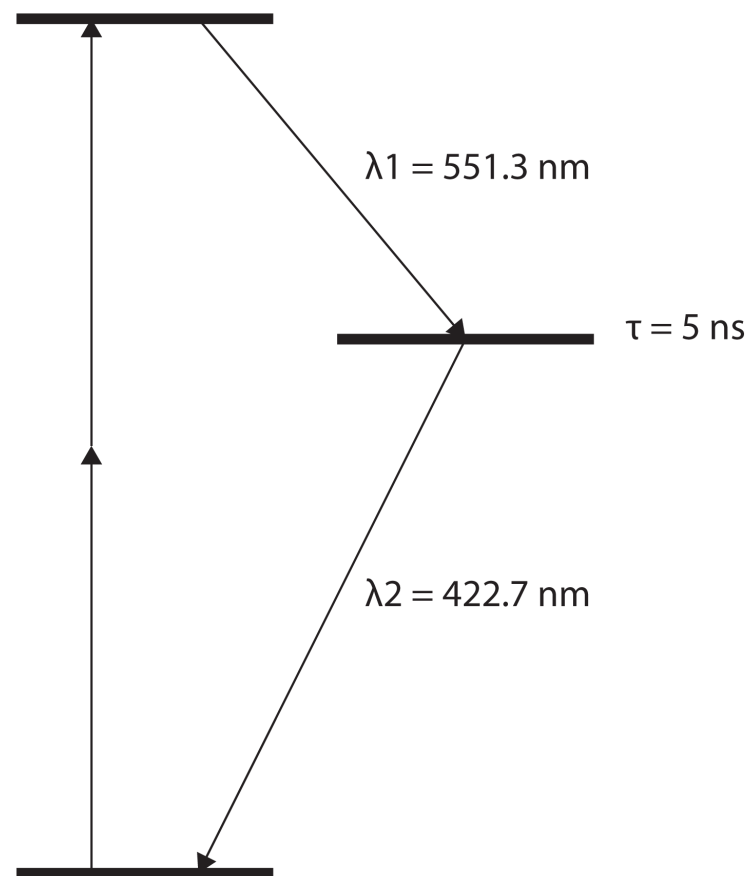
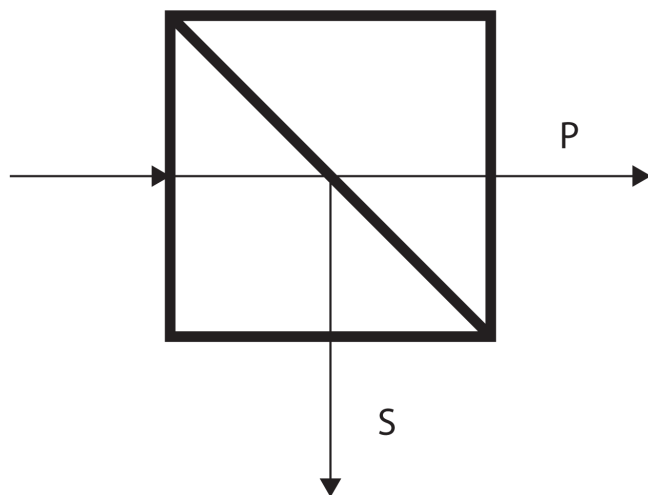
Aspect, A. (1982)

- Entangled photon pair
 - calcium-40 cascade
 - Rate: $5 \times 10^7 \text{ s}^{-1}$

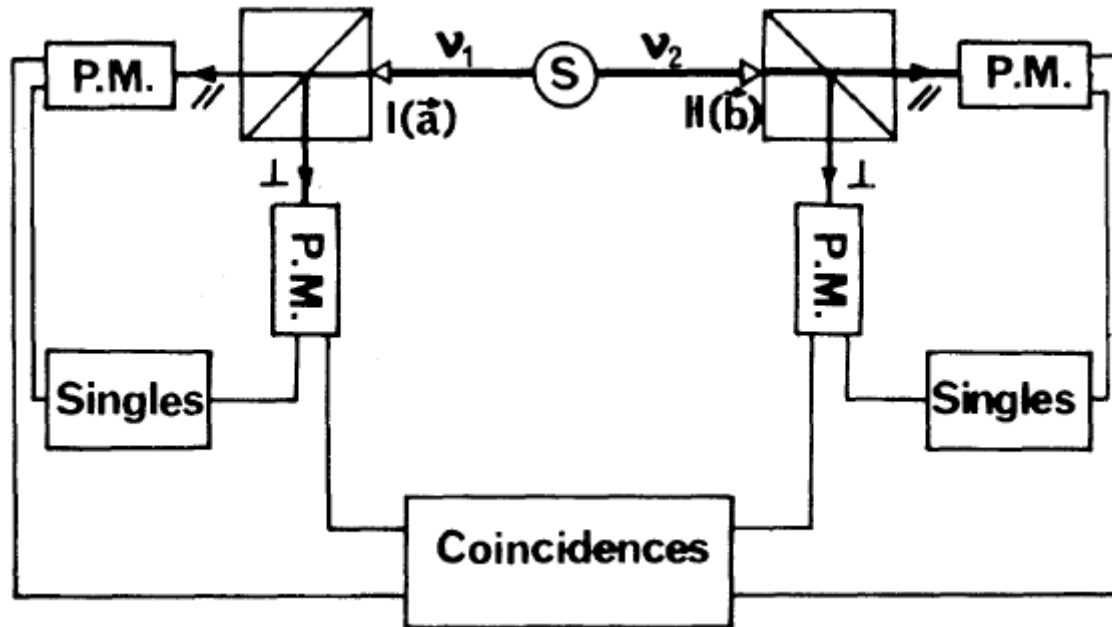


Aspect, A. (1982)

- Entangled photon pair
 - calcium-40 cascade
 - Rate: $5 \times 10^7 \text{ s}^{-1}$
- Two channel polarizer
 - $T^P = 0.950$, $R^P = 0.007$

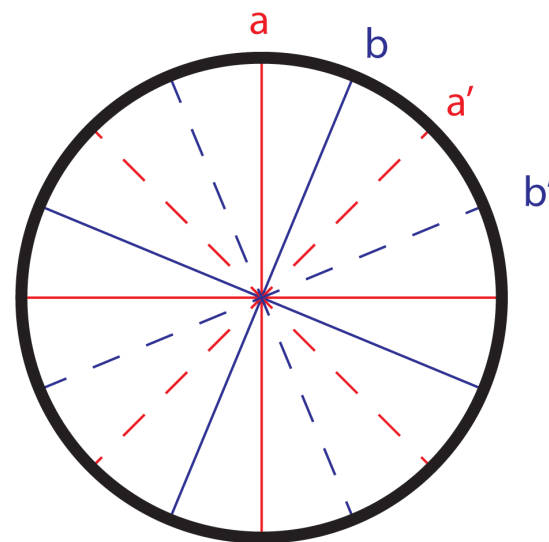


Aspect, A. (1982) - Experimental Setup



Aspect, A. (1982) - Bell Inequality

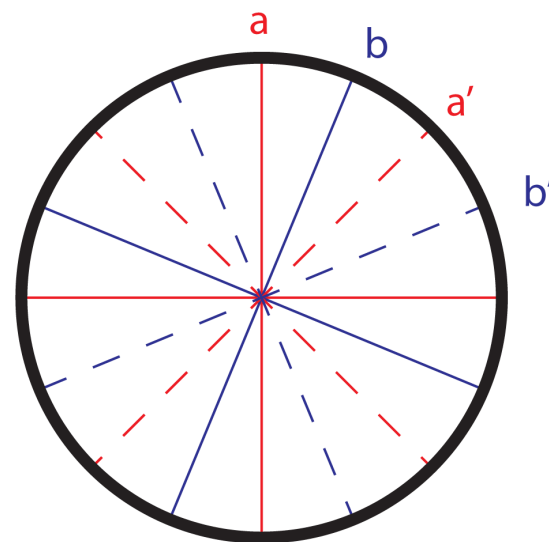
$$S(a, b) = E(a, b) - E(a, b') + E(a', b) + E(a', b')$$



Aspect, A. (1982) - Bell Inequality

$$S(a, b) = E(a, b) - E(a, b') + E(a', b) + E(a', b')$$

$$E(a, b) = \frac{R_{++} + R_{--} - R_{+-} - R_{-+}}{R_{++} + R_{--} + R_{+-} + R_{-+}}$$

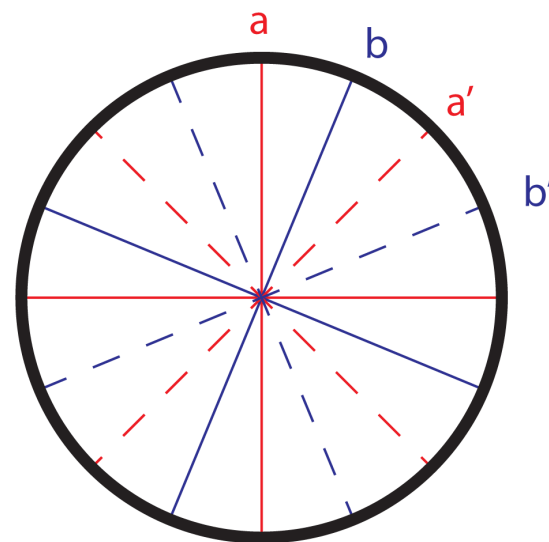


Aspect, A. (1982) - Bell Inequality

$$S(a, b) = E(a, b) - E(a, b') + E(a', b) + E(a', b')$$

$$E(a, b) = \frac{R_{++} + R_{--} - R_{+-} - R_{-+}}{R_{++} + R_{--} + R_{+-} + R_{-+}}$$

$$E(a, b) = \cos(2(a - b))$$

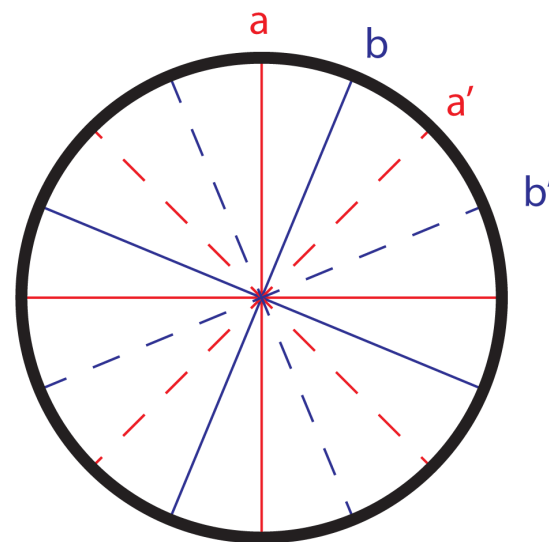


Aspect, A. (1982) - Bell Inequality

$$S(a, b) = E(a, b) - E(a, b') + E(a', b) + E(a', b')$$

$$E(a, b) = \frac{R_{++} + R_{--} - R_{+-} - R_{-+}}{R_{++} + R_{--} + R_{+-} + R_{-+}}$$

$$E(a, b) = F \frac{(T_1^P - T_1^S)(T_2^P - T_2^S)}{(T_1^P + T_1^S)(T_2^P + T_2^S)} \cos(2(a - b))$$



Aspect, A. (1982) - Bell Inequality

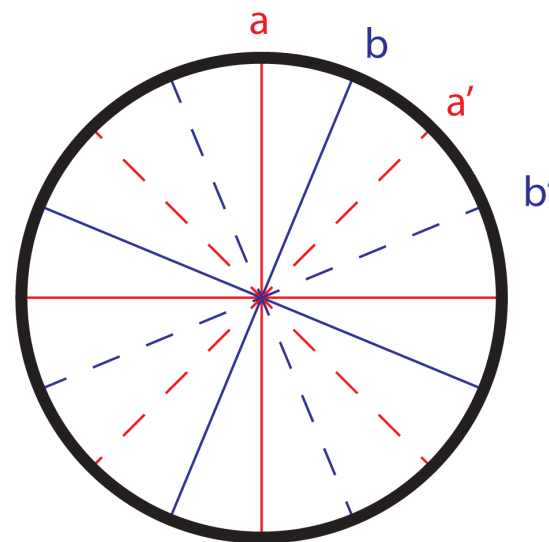
$$S(a, b) = E(a, b) - E(a, b') + E(a', b) + E(a', b')$$

$$E(a, b) = \frac{R_{++} + R_{--} - R_{+-} - R_{-+}}{R_{++} + R_{--} + R_{+-} + R_{-+}}$$

$$E(a, b) = F \frac{(T_1^P - T_1^S)(T_2^P - T_2^S)}{(T_1^P + T_1^S)(T_2^P + T_2^S)} \cos(2(a - b))$$

$$S_{exp} = 2.697 \pm 0.015$$

$$S_{QM} = 2.70 \pm 0.05$$

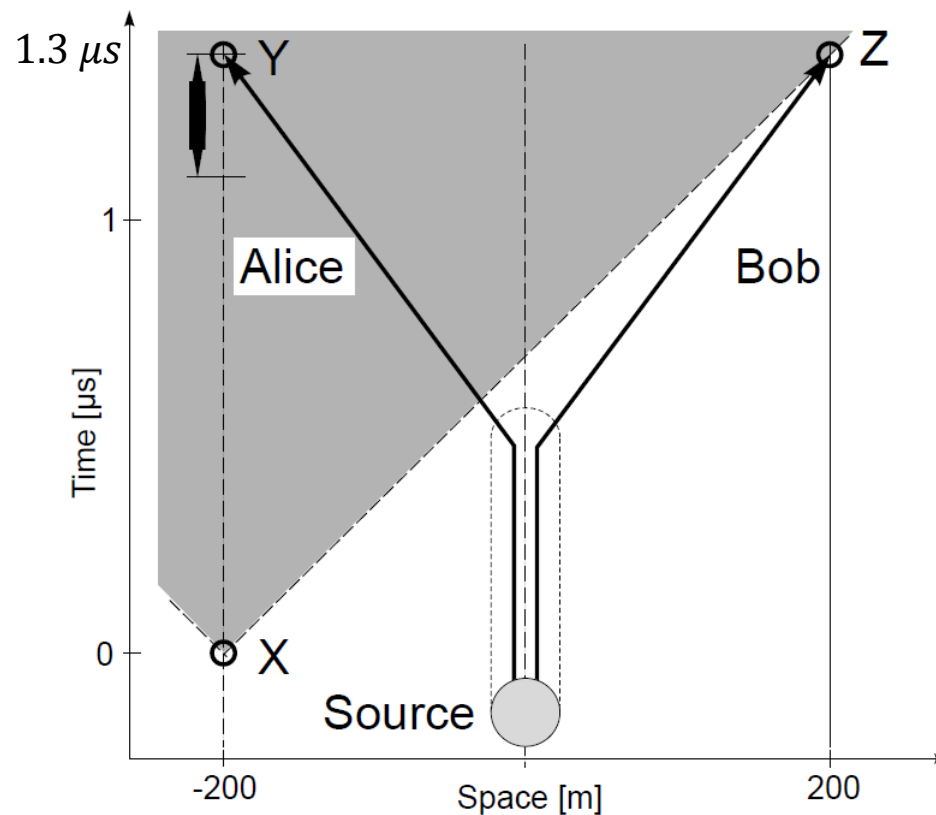


Experimental violation of Bell inequalities

- *Experimental Realization of EPR-Bohm Gedankenexperiment: A New Violation of Bell's Inequalities.* Aspect, A. (1982)
- *Violation of Bell inequality under strict Einstein locality conditions.* Weihs, G. (1998)
- *Bell inequality violation with two remote atomic qubits.* Matsukevich, D. N. (2008)
- *Violation of Bell's inequality in Josephson phase qubits.* Ansmann, M. (2009)

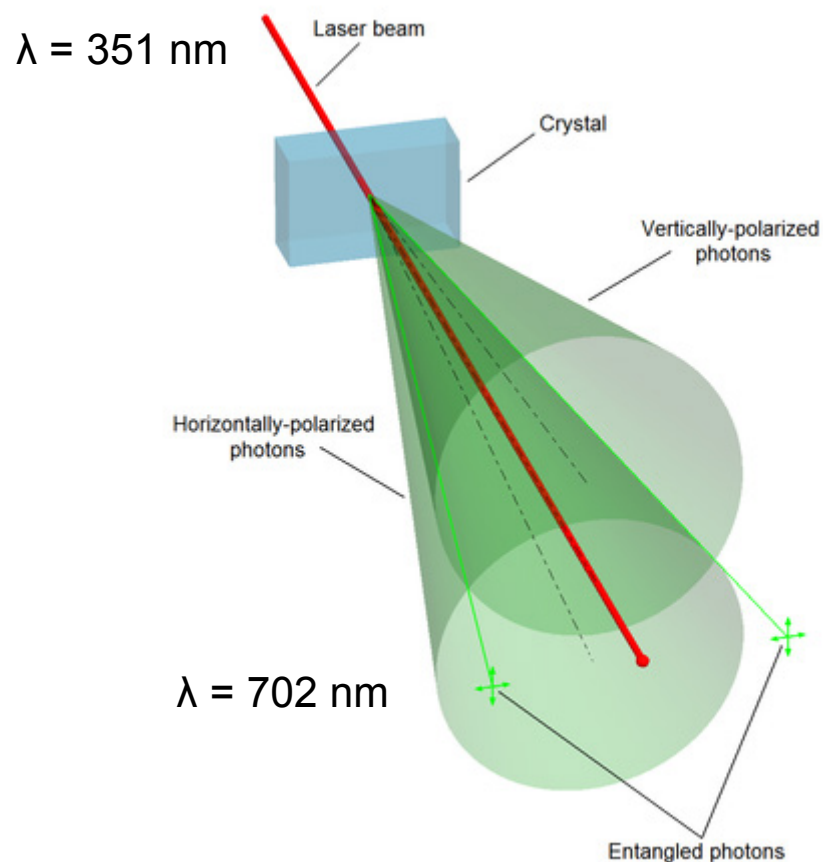
Weih's, G. (1998) - Locality

- Locality loophole
- Random choice of the measurement basis
- Spacelike separated



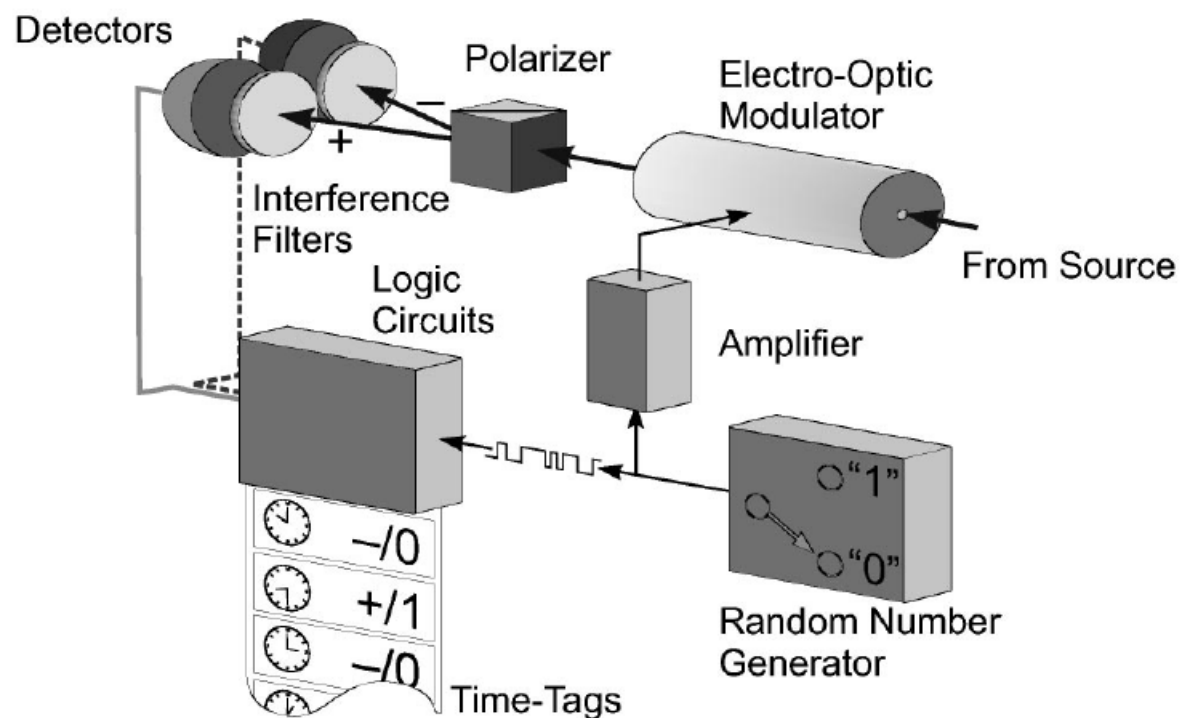
Weih's, G. (1998) - Source

- BBO Crystal
- degenerate type-II parametric down-conversion



Weih's, G. (1998) - Observer Station

- Physical random number generator
- Electro-optic modulator
- Precise clock
 - Resolution: 75 ps

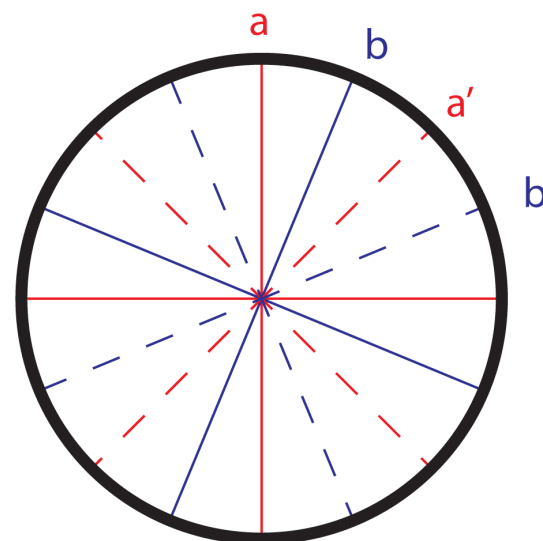


Weih's, G. (1998) - Bell Inequality

Reduced visibility : 97 %

$$S_{exp} = 2.73 \pm 0.02$$

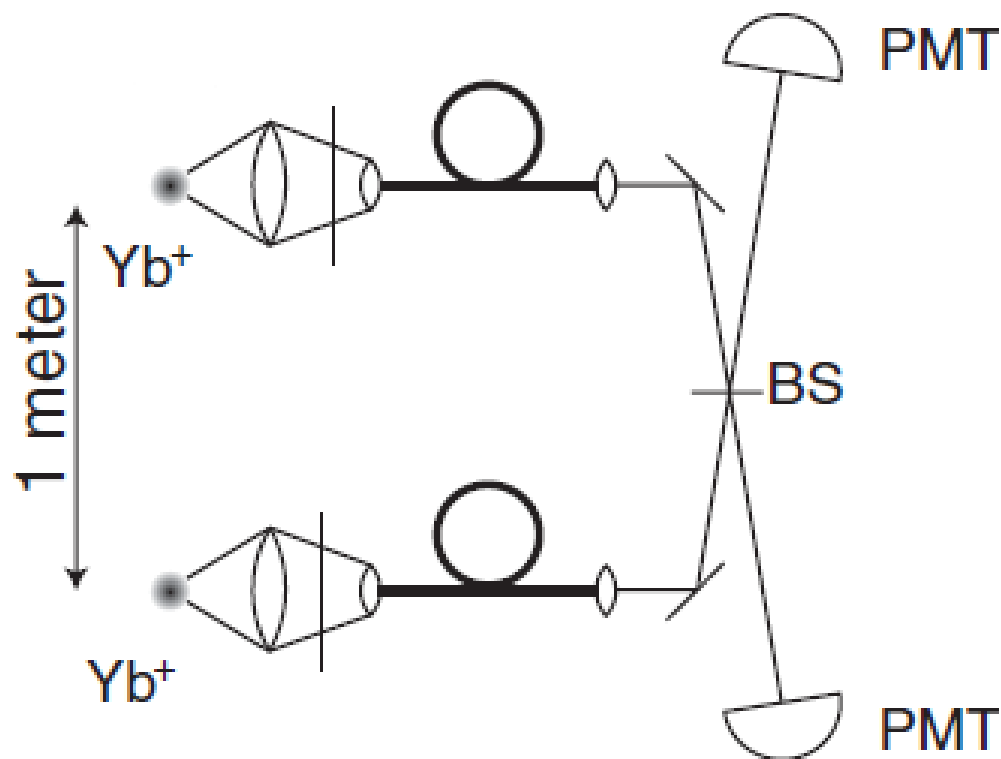
$$S_{QM} = 2.74$$



Experimental violation of Bell inequalities

- *Experimental Realization of EPR-Bohm Gedankenexperiment: A New Violation of Bell's Inequalities.* Aspect, A. (1982)
- *Violation of Bell inequality under strict Einstein locality conditions.* Weihs, G. (1998)
- ***Bell inequality violation with two remote atomic qubits.*** Matsukevich, D. N. (2008)
- *Violation of Bell's inequality in Josephson phase qubits.* Ansmann, M. (2009)

Matsukevich, D. N. (2008) - Experimental Setup



Matsukevich, D. N. (2008) - Bell Inequality

- Efficiency loophole closed

- $S_{ip} = 2.54 \pm 0.02$

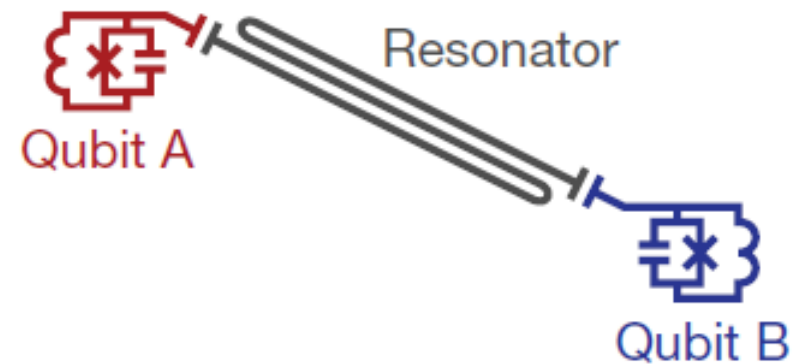
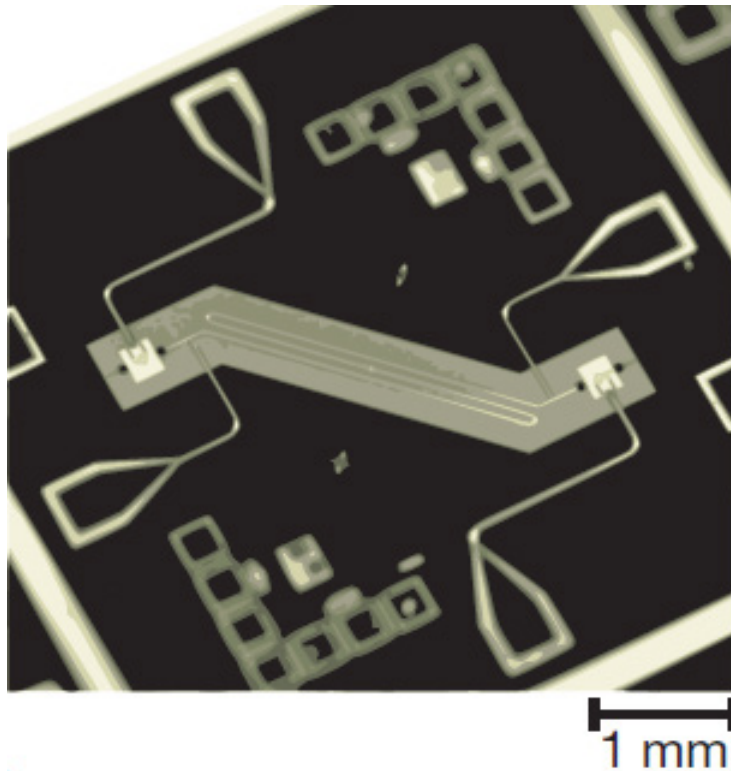
$$S_{ii} = 2.22 \pm 0.07$$

- Locality loophole: 15 *km* separation

Experimental violation of Bell inequalities

- *Experimental Realization of EPR-Bohm Gedankenexperiment: A New Violation of Bell's Inequalities.* Aspect, A. (1982)
- *Violation of Bell inequality under strict Einstein locality conditions.* Weihs, G. (1998)
- *Bell inequality violation with two remote atomic qubits.* Matsukevich, D. N. (2008)
- *Violation of Bell's inequality in Josephson phase qubits.* Ansmann, M. (2009)

Ansmann, M. (2009) - Circuit Diagram



Ansmann, M. (2009) - Bell Inequality

- Measurement fidelities: 94.6 % and 93.4 %
→ Efficiency loophole closed

$$S_{exp} = 2.0732 \pm 0.0003$$

$$S_{QM} = 2.064$$

Summary

- Aspect, A. (1982)
 - Two channel polarizer
- Weihs, G. (1998)
 - Locality loophole
- Matsukevich, D. N. (2008) & Ansmann, M. (2009)
 - Efficiency loophole
- No experiment closed both loopholes simultaneously